

Exam Notes for Exam 70-230 - Designing and Implementing Solutions with Microsoft BizTalk Server 2000, Enterprise Edition



Abstract:

This certification exam measures your ability to implement, administer, and troubleshoot information systems that incorporate Microsoft BizTalk Server 2000. This exam also measures your ability to analyze, design, build, and implement integrated business process solutions by using Microsoft BizTalk Server 2000. Before taking the exam, you should be proficient in the job skills listed within the testable objectives listed within this guide. This guide will help to aim your studies in the right direction for Exam 70-230

Exam related information:

Exam 70-230 is in development. The live version of the exam is expected to be released in November 2001. This is OK, because the size and complexity of this product will need much study and hands on time to become proficient at it.

Credit Toward Certification:

You can use this exam to become a Microsoft Certified Professional. This is also an Elective for both the MCSE and MCS D tracks. When you pass this exam, you achieve [Microsoft Certified Professional](#) status. You also earn elective credit toward [Microsoft Certified Systems Engineer](#) certification and elective credit toward [Microsoft Certified Solution Developer](#) certification.

Audience Profile:

Candidates for this exam operate in medium to very large computing environments that use Microsoft BizTalk Server 2000. Candidates have a minimum of one year's experience designing and developing distributed applications by using Microsoft technologies. Candidates must have expertise with XML, and experience with XSLT is recommended. Candidates must have a working knowledge of COM+, including development tools such as Microsoft Visual Basic and Microsoft Visual C++, and a working knowledge of Microsoft Internet Information Services (IIS), ASP, and Microsoft SQL Server Enterprise Edition. Environmental characteristics include:

- Document interchange via HTTP, SMTP, Message Queuing, and FTP
- Transactional and multi-tier applications
- Secure protocols such as SSL and S/MIME that use public-key infrastructure (PKI)
- Relational database management system (RDBMS)
- Distributed networks

Visit Examnotes.net for all your certification needs.

Visit Cert21.com for the best online practice exams.

Visit CertPortal.com – most powerful IT certifications search engine.

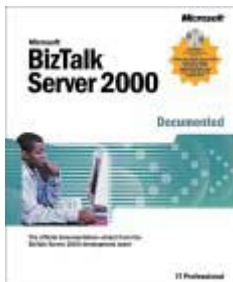
Links and Info:

Note: These are very good links and are very helpful with tons of free information. Please visit and use to augment your studies

- [BizTalk Server Home Page](#)
- [Write less code and do more with BizTalk Server](#)
- [BizTalk Server 2000 Service Pack 1](#)
- [Download the BizTalk Server 120-Day Trial Software](#)
- [Learning BizTalk Server 2000](#)
- [BizTalk Server on MSDN](#)
- [BizTalk Server on TechNet](#)
- [BizTalk.org](#)
- [Microsoft Business Site](#)
- [Product Overview](#)
- [Features](#)
- [Pricing & Licensing](#)
- [Case Studies](#)

Publications:

These are current publication that you may be able to use to help your studies. I have read the BizTalk 2000 server beginners guide and thought it was an excellent start.



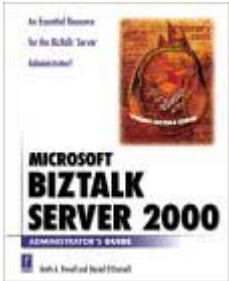
This is from Microsoft and MS Press:

This is the beginners Guide:

Visit Examnotes.net for all your certification needs.
Visit Cert21.com for the best online practice exams.
Visit CertPortal.com – most powerful IT certifications search engine.



(I read this, it was excellent)



Here is an Administrators Guide to BizTalk server 2000

Skills Being Measured:

This certification exam measures your ability to implement, administer, and troubleshoot information systems that incorporate Microsoft BizTalk Server 2000. This exam also measures your ability to analyze, design, build, and implement integrated business process solutions by using Microsoft BizTalk Server 2000. Before taking the exam, you should be proficient in the job skills listed below.

Planning and Designing BizTalk Server Solutions

- Plan and design the security architecture.
- Design the BizTalk Server environment.
- Design certificate services. Considerations include certificate placement and encryption strategy.
- Design Microsoft SQL Server database security.
- Plan and design BizTalk Server for performance, maintainability, extensibility, availability, scalability, and reliability. Considerations include number of transactions per time increment, bandwidth, capacity, peak versus average usage requirements, response-time expectations, barriers to performance, processes per server, maintenance expectations, location and knowledge level of maintenance staff, impact of third-party maintenance agreements, hours of operation, level of availability, impact of downtime, growth of the partners, growth of the company, volume of documents, and cycle of use.
- Design self-routing documents.
- Design receive services
- Distribute systems and applications across a BizTalk Server group.
- Design and formulate hardware needs. Considerations include types of computers and number of computers.

Visit Examnotes.net for all your certification needs.

Visit Cert21.com for the best online practice exams.

Visit CertPortal.com – most powerful IT certifications search engine.

- Design architecture segmentation and strategy.
- Design multiple-server work processing.
- Design BizTalk Server group architecture
- Plan and design integration with existing applications.
- Analyze requirements for integrating a solution with existing applications. Considerations include format and location of existing data, connectivity to existing applications, data conversion, and data enhancement requirements.
- Analyze requirements for integrating a solution with existing network architecture.
- Design integration solutions to meet the requirements.
- Derive the physical design.
- Design the properties, methods, and events of COM+ and script components.
- Design Message Queuing architecture.
- Design document interchange schemas and transformations.
- Design business process orchestration.
- Design messaging ports and channels architecture.

Installing BizTalk Server

- Install BizTalk Server. Considerations include attended and unattended installations.
- Troubleshoot failed installations.
- Diagnose and resolve problems that involve the operating system configuration.
- Diagnose and resolve problems that involve network configuration.
- Diagnose and resolve problems that involve SQL Server configuration.

Building Document Interchanges

- Configure organizations and applications.
- Configure document definitions.
- Create and configure messaging ports. Considerations include name, type, and definition.
- Configure a messaging port for an organization or application.
- Select and create envelopes. Considerations include name, type, and definition such as reliable, electronic data interchange (EDI), flat-file, custom XML, and custom.
- Create and configure channels.
- Specify an organization or application.
- Override messaging port defaults.
- Configure an inbound and outbound document definition.
- Select a map.
- Configure tracking and logging options.
- Configure a channel from an organization or application.
- Configure receive architecture. Considerations include receive functions and scripts.
- Configure receive functions to receive documents via FTP.
- Configure receive functions to receive documents via Message Queuing.
- Configure message tracking and logging by using BizTalk Messaging Manager.

Creating Auxiliary Components for BizTalk Server Solutions

- Create a COM+ component that implements custom transport logic.
- Create application integration components (AICs).
- Create pipeline components.
- Submit documents programmatically.
- Identify situations for applying custom components.

Visit Examnotes.net for all your certification needs.

Visit Cert21.com for the best online practice exams.

Visit CertPortal.com – most powerful IT certifications search engine.

Administering BizTalk Server Solutions

- Monitor and optimize BizTalk Server performance. Tools include performance counters, Event Viewer, BizTalk Server Administration, Document Tracking and Activity (DTA), XLANG Event Monitor, Windows Management Instrumentation (WMI), and SQL Server Enterprise Manager.
- Monitor SQL Server for BizTalk Server performance.
- Monitor and optimize Microsoft Windows 2000 Server for BizTalk Server performance.
- Monitor BizTalk Server by using Document Tracking and Activity (DTA).
- Optimize BizTalk Server for receive and submit processing.
- Monitor BizTalk Orchestration Services by using the XLANG Event Monitor.
- Monitor BizTalk Server queues.
- Audit business documents by using BizTalk Document Tracking.
- Diagnose and resolve BizTalk Server implementation errors.
- Diagnose and resolve Windows 2000 security problems.
- Diagnose and resolve BizTalk Server errors.
- Diagnose and resolve documents in the Suspended queue.
- Diagnose and resolve receive function errors.
- Diagnose and resolve envelope errors.
- Diagnose and resolve parsing errors.
- Diagnose and resolve messaging port errors.
- Monitor and analyze error logs for transaction failure. Considerations include error logs, Windows 2000 event logs, and System Monitor counters.
- Diagnose and resolve ancillary service errors. Considerations include WebDAV, SQL Server, Message Queuing, HTTP, HTTPS, and SMTP services.

Creating Schemas and Transformations

- Import and modify schemas by using BizTalk Editor.
- Create new schemas by using BizTalk Editor.
- Create schemas for flat files.
- Create XDR schemas to match the electronic data interchange (EDI) specification.
- Create schema mapping by using BizTalk Mapper. Considerations include functoids and validation.

Implementing Business Processes by using BizTalk Orchestration Designer

- Design the business process by using Flowchart shapes.
- Implement business process error handling
- Bind business process Implementation shapes. Considerations include the Message Queuing shape, the Script Component shape, the COM Component shape, and the BizTalk Messaging shape.
- Create transactional business processes.
- Create long-running and short-lived transactions.
- Diagnose and resolve transactional and component errors.
- Create correlations back to long-running business processes.
- Map the data flow between messages.
- Configure orchestration ports for communication between business processes and transport bindings.
- Diagnose and resolve orchestration errors by using the XLANG Event Monitor.


Note: Make sure you know all these objectives! Load BizTalk and make sure you cover each topic above in detail. Use this guide and the help system to focus the answers to your questions.

Visit Examnotes.net for all your certification needs.

Visit Cert21.com for the best online practice exams.

Visit CertPortal.com – most powerful IT certifications search engine.

Important: Here is your course of study

- Read the Exam notes and perhaps a book from up above
- Download evaluation copies of the software if you don't have it already - Practice
- Use the "Help" system or product documentation that can be downloaded here: [Here](#)
- Download this Demo:  [Click here to download sample - LearnBizTalk.exe.](#)
- Practice using BizTalk with a copy of the above objectives and make sure you know them

This mixture should prepare you for the beta exam and for the live exam to follow. There is a lot of information in the above bullets and most of it is totally **free**. I used all this to learn BizTalk and it was very helpful.

BizTalk 2000 Exam Notes

Getting Started with Microsoft BizTalk Server 2000

- A member of the Microsoft .NET Enterprise Server family of products, Microsoft BizTalk Server 2000 unites, in a single product, enterprise application integration (EAI) and business-to-business (B2B) integration.
- BizTalk Server 2000 enables developers, IT professionals, and business analysts to easily build dynamic business processes that span applications, platforms, and businesses over the Internet
- In addition to BizTalk Server 2000, Microsoft, with industry partners, has led innovation on enabling technologies that are necessary for Internet-based business solutions, including BizTalk Framework 2.0, which is a platform-independent, Extensible Markup Language (XML) framework for application integration and electronic commerce
- BizTalk Framework 2.0 is not a standard, but it builds upon existing standards, such as the Simple Object Access Protocol (SOAP)
- SOAP is also a key technology in other members of the .NET product line, such as Microsoft Visual Studio 7.0. BizTalk Framework 2.0 provides the basis for interoperable reliable messaging for BizTalk Server 2000
- For more information about BizTalk Framework 2.0, as well as information about BizTalk Server 2000 product resources such as community services, a large library of schemas, and white papers, go to the Microsoft BizTalk Server 2000 Web site: <http://www.microsoft.com/biztalk>
- BizTalk Server 2000 enables you to rapidly build and deploy integrated business processes within your organization and with your trading partners
- You can get your solutions to market quicker and use fewer resources so that you can move swiftly to respond to your customer needs and competitive pressures
- BizTalk Server 2000 offers a suite of tools and services that make building business processes and integrating applications fundamentally faster
- Secure, reliable trading partner relationships can be quickly implemented independent of operating system, programming model, or programming language
- **Build Dynamic Business Processes**
 - The BizTalk Server infrastructure helps you to quickly integrate, manage, and automate dynamic business processes by exchanging business documents among applications within or across organizational boundaries
 - With all the tools that companies need for business process orchestration, BizTalk Server helps you build processes that span not only applications, but also businesses, over the Internet
 - Graphical tools make it easy for business analysts and application developers to model and implement solutions for your business

Visit Examnotes.net for all your certification needs.

Visit Cert21.com for the best online practice exams.

Visit CertPortal.com – most powerful IT certifications search engine.

- **Easily Integrate Applications and Business Partners**

- BizTalk Server 2000 makes it easy for developers to integrate applications and businesses
- Business analysts and application developers benefit from a host of rich graphical tools for building Extensible Markup Language (XML) schema, performing schema transformation, establishing trading partner relationships over the Internet, and tracking and analyzing data and documents that are exchanged
- With support for XML and standard Internet technologies, BizTalk Server 2000 extends the features of traditional e-commerce and electronic data interchange (EDI) to entire e-commerce communities

- **Ensure Interoperability By Using Public Standards**

- With extensive support for public standards and specifications such as XML, EDI, and Hypertext Transfer Protocol (HTTP) and with security standards such as public key encryption, digital signatures, and encryption, BizTalk Server 2000 ensures the highest level of interoperability and security with your applications and business partners

- **What Is BizTalk Server?**

- In plain English, BizTalk Server will take the mixture of Business systems you use like SAP R3, and JD Edwards, and create a web XML enabled middleman" to make the transfer between dissimilar systems easier and keep coding down to a minimum
- Microsoft BizTalk Server 2000 provides a powerful development and execution environment that orchestrates business processes, both within and between businesses
- BizTalk Server can handle business transactions that run as long as weeks or months
- BizTalk Server 2000 features include the ability to define business document specifications and how these documents have to be transformed when passed between applications, and the ability to monitor and log server activity
- The server provides a standard gateway for sending and receiving documents across the Internet, as well as providing a range of services that ensures data integrity, delivery, and security

- **Why Use BizTalk Server?**

- You might ask yourself: "Why should I use BizTalk Server over any other solution?" In today's world of fast-changing technologies and standards, it is imperative to ensure that a solution you build is based on commonly accepted protocols and document formats
- It is also important to know that your solution will enable integration with the widest variety of business partners and applications, will work securely over the Internet, and will scale as your business needs grow and BizTalk Server addresses this very effectively
- You need the ability to support legacy systems and EDI (electronic data interchange) and X12 networks. And perhaps most importantly, to effectively compete in today's market, you need to be able to build new solutions on "Internet time," utilizing open Internet standards and technology to assure maximum interoperability – BizTalk can give you the power and tools to do that
- Microsoft BizTalk Server uses XML internally to "describe" your business documents, and it uses such standard Internet protocols as HTTP and SMTP to deliver these documents to their destinations, thus allowing you to interoperate with various applications running in any environment as long as those applications support Internet standards. You can send documents to BizTalk Server as XML, EDI or as flat files.
- So why is XML important, so important, in fact, that the BizTalk Server team chose this language to represent internal documents and processes
- Even cooler is that Windows Office XP Pro will come with the ability to be a BizTalk Server "Client" because it has the power to save attachments as native XML documents

Visit Examnotes.net for all your certification needs.

Visit Cert21.com for the best online practice exams.

Visit CertPortal.com – most powerful IT certifications search engine.

- **Installing BizTalk 2000 Server**

- Before you install Microsoft BizTalk Server, make sure you have read the Readme.htm and Installation Guide.htm documents, paying particular attention to the following important prerequisites:
 - You must have a computer running Microsoft Windows 2000 with Service Pack 1 or above (Professional or Server both work), including IIS and MSMQ services, and an account with administrative rights on that computer
 - You must have Microsoft SQL Server 7.0 with Service Pack 2 or above (you can install SQL Server Desktop Edition if you choose to run everything on a single workstation running Windows 2000 Professional) and password for the "sa" account. If you use SQL Server 2000, you must configure it for "mixed" security mode in the install wizards that is not the default
 - Microsoft Visio 2000 SR1 Standard or above must be installed on the computer where you are installing BizTalk Server
 - The Enable authoring option on the Server Extensions tab of the Default Web Site must be turned off in the Internet Services Manager
 - Also, in order to execute the scripts for these lessons you need to install MSMQ component of Windows 2000

Note: Make sure you are familiar with these pre-requisites, as they are numerous

- **With BizTalk you can:**

- Quickly Orchestrate Business Processes
- Design and build dynamic, distributed business processes with this visual tool
- BizTalk Orchestration Designer brings together business analysts, information technology (IT) professionals, and developers in a common design environment
- Rapidly Generate XML Schemas
- It's easy to create and edit Extensible Markup Language (XML) document schemas with BizTalk Editor.
- Easily Transform XML Documents
- Easily transform one schema into another with BizTalk Mapper—generating World Wide Web Consortium (W3C) standard Extensible Stylesheet Language Transformations (XSLT) files for transforming documents
- Quickly Establish Trading Relationships
- BizTalk Messaging Manager automates the process of setting up trading profiles and agreements to exchange business documents with applications and trading partners over the Internet. This management technology is based on a graphical user interface (UI), and is non-programmatic and easy to use

- **BizTalk has support for:**

- Extensive XML Support - All BizTalk Server 2000 document exchange is done in W3C-standard XML and all document transformation is done in W3C-standard XSLT
- BizTalk Server 2000 supports:
 - Electronic data interchange
 - Hypertext Transfer Protocol (HTTP)
 - HTTPS
 - Simple Mail Transfer Protocol (SMTP)
 - Networked File Shares

Visit Examnotes.net for all your certification needs.

Visit Cert21.com for the best online practice exams.

Visit CertPortal.com – most powerful IT certifications search engine.

- BizTalk Framework 2.0 - The first open industry framework for reliable document exchange and routing, BizTalk Framework version 2.0 is compliant with Simple Object Access Protocol (SOAP) version 1.1 and provides exactly-once delivery of documents
- Open Binding Architecture - The open binding adapter architecture allows any developer or independent software vendor (ISV) to build adapters that allow their products to be accessed from BizTalk Server

Standards for Business systems transfer:

- **ANSI X12**
 - EDI standards set by Accredited Standards Committee X12, whose work is approved by the American National Standards Institute.
- **UN/EDIFACT**
 - The international EDI standard as developed through the United Nations
 - This standard is commonly used in Europe, as well as Japan and other Asian countries and regions
 - Also known as United Nations/Electronic Data Interchange For Administration, Commerce, and Transport
- **Web Distributed Authoring and Versioning (WebDAV)**
 - An extension to the HTTP 1.1 standard that exposes a hierarchical file storage media, such as a file system, over an HTTP connection
 - WebDAV locks documents to prevent users from accidentally overwriting each other's changes
 - It also enables users to share and work with server-based documents, regardless of their authoring tools, platforms, or the type of Web servers on which the files are stored
- **Electronic data interchange (EDI)**
 - A set of standards used to control the transfer of documents, such as purchase orders and invoices, between computers.
- **Extensible Markup Language (XML)**
 - A specification developed by the World Wide Web Consortium (W3C) that enables designers to create customized tags beyond the capabilities of standard HTML
 - While HTML uses only predefined tags to describe elements within the page, XML enables tags to be defined by the developer of the page
 - Tags for virtually any data item, such as a product or an amount due, can be used for specific applications
 - This enables Web pages to function as database records
- **Extensible Stylesheet Language (XSL)**
 - A style sheet format for Extensible Markup Language (XML) documents
 - XSL is used to define the display of XML in the same way that cascading style sheets (CSS) are used to define the display of Hypertext Markup Language (HTML)

BizTalk Server uses XSL as the translation language between two specifications

XLANG

- **XLANG identity**
 - A globally unique ID that is used to distinguish version instances of an XLANG schedule drawing
 - This property is read-only and cannot be changed
 - Every time an XLANG schedule drawing is updated, this identity is also updated
 - The XLANG identity can be used to correlate an XLANG schedule with the specific version of an XLANG schedule drawing from which the schedule was compiled

Visit Examnotes.net for all your certification needs.

Visit Cert21.com for the best online practice exams.

Visit CertPortal.com – most powerful IT certifications search engine.

- **XLANG language**
 - A language that describes the logical sequencing of business processes, as well as the implementation of the business process by using various application services
 - The XLANG language is expressed in XML

- **XLANG schedule**
 - Specific business processes expressed in the XLANG language. An XLANG schedule is saved with the file extension .skx

- **XLANG schedule drawing**
 - A drawing that represents a business process
 - In BizTalk Orchestration Designer, once a drawing is complete, it can be compiled and run as an XLANG schedule
 - An XLANG schedule drawing is saved with the file extension .skv

- **XLANG schedule instance**
 - An evocation of a schedule
 - An XLANG schedule represents only the business process and implementation services
 - A single instance, or multiple instances, of an XLANG schedule can be run by the XLANG Scheduler Engine
 - Different instances of the same XLANG schedule contain different messages, but all instances follow the same business-process rules

- **XLANG schedule state**
 - The information contained in an XLANG schedule instance
 - This information includes messages that have been sent or received by that instance, any COM objects used by that instance, and the progress of that instance toward the completion of the business process

- **XLANG Scheduler**
 - The default COM+ application that is installed when you install BizTalk Server 2000
 - This application is used to host running instances of XLANG schedules

- **XLANG Scheduler Engine**
 - A service that runs XLANG schedule instances and controls the activation, execution, dehydration, and rehydration of an XLANG schedule

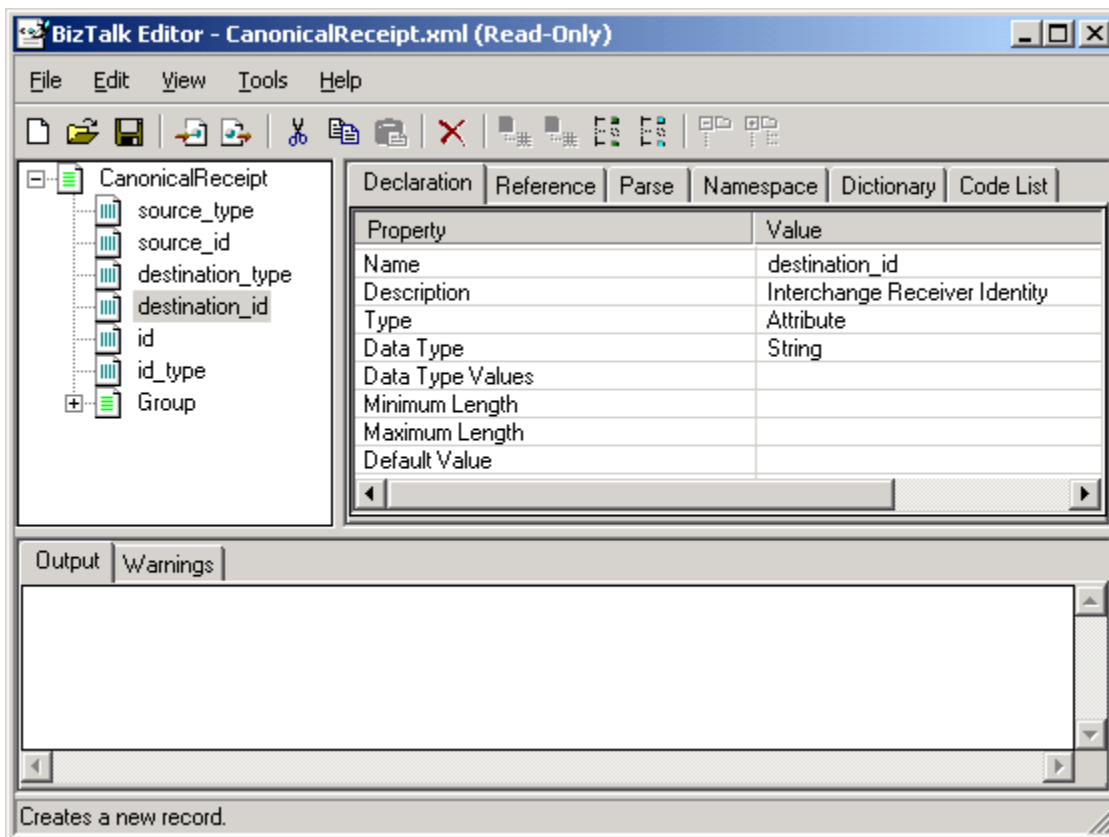
- **XML-Data Reduced (XDR)**
 - An XML Schema dialect proposed by Microsoft and submitted to the World Wide Web Consortium (W3C) in 1998
 - Like XML-Data, XDR is a syntax for Extensible Markup Language (XML) schemas that define the characteristics of an XML document. XDR is a subset of XML-Data

- **XPath**
 - A comprehensive language used for navigating through the hierarchy of an XML document
 - XPath expressions can obtain XML element and attribute information, select data that matches specific criteria, and perform comparisons on the data retrieved. Also called a node path

Visit Examnotes.net for all your certification needs.
 Visit Cert21.com for the best online practice exams.
 Visit CertPortal.com – most powerful IT certifications search engine.

BizTalk Components:

- **BizTalk Server 2000**
 - A new Microsoft product for business-process automation and application-integration both within and between businesses
 - BizTalk Server 2000 provides a powerful Web-based development and execution environment that integrates loosely coupled, long-running business processes, both within and between companies
 - BizTalk Server 2000 features include the composition of new and existing XLANG schedules; integration among existing applications; the definition of document specifications and specification transformations; and the monitoring and logging of run-time activity
 - The server provides a standard gateway for sending and receiving documents across the Internet, as well as providing a range of services that ensure data integrity, delivery, security, and support for the BizTalk Framework and other key document formats
- **BizTalk Server Administration**
 - A Microsoft Management Console (MMC) interface that is used to administer the BizTalk Server 2000 group of servers and their properties, to monitor receive functions, and to monitor work items in the Microsoft SQL Server queues that are used by the server group
- **BizTalk Document Tracking**
 - A Web-based user interface (UI) that is used to access all BizTalk Messaging Services tracking information
 - It can also track XLANG schedule status for BizTalk Orchestration Services
- **BizTalk Editor**
 - Tools with which you can create, edit, and manage specifications. With BizTalk Editor you can create a specification based on a specification template, an existing schema, certain types of document instances, or a blank specification

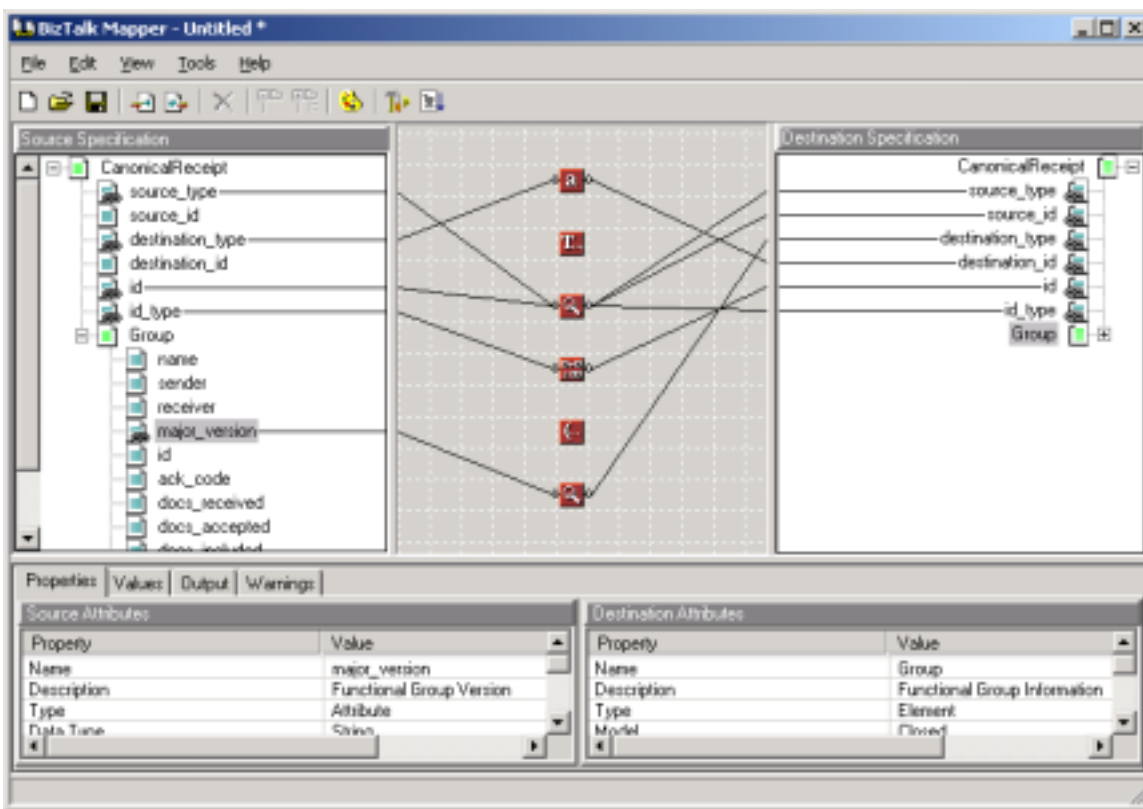


- **BizTalk Framework**

- A platform-neutral e-commerce framework that is based on Extensible Markup Language (XML) schemas and industry standards
- The framework enables integration across industries and between business systems, regardless of platform, operating system, or underlying technology
- Specifically, it is composed of three things: schema, products, and services
- For more information about the BizTalk Framework, go to the BizTalk Web site www.microsoft.com/biztalk

- **BizTalk Mapper**

- A tool with which you can create maps that define the correspondence between the records and fields in one specification and the records and fields in another specification
- A map contains an Extensible Stylesheet Language (XSL) style sheet that is used by BizTalk Server to perform the transformation described in the map



- **BizTalk Messaging Management database**

- A Microsoft SQL Server database that stores the information related to all server configurations, including group and server settings, receive functions, and all messaging configuration information for the objects that are created by using BizTalk Messaging Manager, or by accessing the BizTalk Messaging Configuration object model

- **BizTalk Messaging Manager**

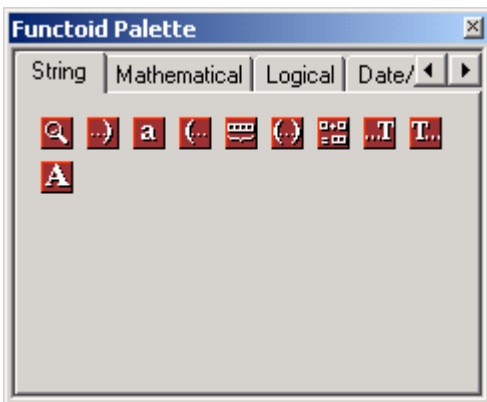
- A graphical user interface (UI) that can be used to configure BizTalk Messaging Services to exchange documents between trading partners and applications of the home organization

Visit Examnotes.net for all your certification needs.

Visit Cert21.com for the best online practice exams.

Visit CertPortal.com – most powerful IT certifications search engine.

- **BizTalk Messaging Services**
 - Services that include sending, receiving, parsing, and tracking documents; receipt generation and correlation; and data mapping, integrity, and security
- **BizTalk Orchestration Designer**
 - A design tool used to create drawings that describe long running, loosely coupled, executable business processes
 - The XLANG schedule drawing is compiled into an XLANG schedule that is used to execute the automated business process
- **BizTalk Orchestration Services**
 - Services that include designing, compiling, and running XLANG schedules
 - Additional services include the ability to create custom COM+ applications to host dedicated XLANG schedule instances, and the persistence of XLANG schedules
- **Functoids**
 - Built-in reusable function that enables complex structural manipulation operations between source specification elements, destination specification elements, and other functoids
- **Functoids Palette**
 - A toolbox that contains all functoids that can be used to create relationships between source specification elements and destination specification elements



- **Shared Queue database**
 - A Microsoft SQL Server database that is shared by all servers within a server group
 - The Shared Queue database stores all checkpoint information related to documents processed by BizTalk Server
 - If a server fails, other computers that use the same Shared Queue database can continue to retrieve messages from and post messages to the Work queue
 - This provides redundancy and process load balancing
 - The Shared Queue database is graphically presented in BizTalk Server Administration as a series of distinct queues
- **Tracking database**
 - A Microsoft SQL Server database associated with a server group that enables the tracking of documents that are processed by the server either individually or in batches
 - You can also track XLANG schedule status

Visit Examnotes.net for all your certification needs.


Visit Cert21.com for the best online practice exams.

Visit CertPortal.com – most powerful IT certifications search engine.

Final Tips

This guide is a great starting point to get you on the road to learning BizTalk. The product is actually very intricate and there is much to learn about it and the entire .NET infrastructure. You definitely must be able to understand BizTalk before you learn how to operate it. This is very critical because many people do not have a solid background in B2B and that is what is required to be able to operate BizTalk properly in a Business environment. You need to understand dissimilar systems and how to interconnect them transparently to the users involved. This takes time, knowledge and experience. One of the ways that I envision using the product is with a current SAP R3 system. Again, if you are not familiar with the basics of BizTalk, you will run into problems learning how to set it up correctly. My exam advice to prepare for this beta, and the live exam is to do the following which I highlighted before and want to highlight again because most of these resources has much of what you need to know and they are free.

Important: Here is your course of study

- Read the Exam notes and perhaps a book from up above
- Download evaluation copies of the software if you don't have it already - Practice
- Use the "Help" system or product documentation that can be downloaded here: [Here](#)
- Download this Demo:  [Click here to download sample - LearnBizTalk.exe.](#)
- Practice using BizTalk with a copy of the above objectives and make sure you know them

This mixture should prepare you for the beta exam and for the live exam to follow. There is a lot of information in the above bullets and most of it is totally **free**. I used all this to learn BizTalk and it was very helpful. The demo is excellent and it installs on the hard drive for you to keep a reference to it. The Help based documentation can also be downloaded to your machine. I suggest you use these free resources. I hope all the information I have compiled is enough to guide us to victory on the exam... regardless the product is very cool to work with!

Good Luck!

BizTalk Exam Prep Guide compiled by:
Robert J Shimonski

<http://www.rsnetworks.net>

Visit Examnotes.net for all your certification needs.
Visit Cert21.com for the best online practice exams.
Visit CertPortal.com – most powerful IT certifications search engine.